



CONTACT US FOR MORE HELP!

(713) 553-6557
jddledwith@scholaready.com
<http://scholaready.com/>

Get the answer guide
for our sample
questions here:



Time For Your Next Level

SAT PREP

FAQs

Which should I take – the SAT or ACT?

Take both exams for 2 reasons:

1) Over the years, the SAT and ACT have become more like each other. For example, the ACT English is nearly identical to the SAT Writing and Language. If you're going to prepare for one exam, you might as well take the other.

2) You may be accused of cheating on the SAT or ACT. When you are accused, your test scores are rescinded; it's as though you never took the exam. If the College Board accuses you of cheating on the SAT, you'll still have your ACT scores. By the same token, if the ACT accuses you of cheating on the ACT, you'll still have your SAT scores.

How many times should I take the SAT?

You may take the SAT as many times as you want. I recommend that you wholeheartedly prepare for at least 2 administrations of the SAT. Keep in mind, at some point, you may get burned out on taking exams.

Should I write the essay on the SAT?

The essay doesn't count toward your cumulative score. Nonetheless, write the essay; highly-selective colleges and universities may want to see your writing performance.

When should I start preparing for the SAT?

Begin preparing for the SAT with rigorous coursework in middle school and high school. Once you select a certain test date, begin taking practice SATs, learning testing strategies, and reviewing the content of the SAT at least 8 weeks before the test date.



READING

Questions: 52 questions | Time: 65 minutes



FAVORITE STRATEGY

Answer the passage-based reading questions in the following order:

1. Vocabulary-in-context
2. Line Reference
3. Infographic-based
4. Detail-specific
5. Main idea



HOW TO PREPARE:

Develop strong literacy skills throughout your life.
Study vocabulary words.
Take practice exams.

TYPES OF PASSAGES:

Literary Narrative, Natural Science, Social Science, Opposing Viewpoints, Pre-1950

TYPES OF QUESTIONS:

Vocabulary-in-Context: Example: "As used in line 41, lead most nearly means..."

Paired Questions: Answer one question. Then, identify the parts of the text that support the answer.

- Main Idea
- Detail-specific
- Infographic-based



WRITING & LANGUAGE

Questions:
44 questions

Time:
35 minutes



FAVORITE STRATEGY

Read the entire passage first and then answer the questions associated with that passage.



Infographics
Grammar and usage
Punctuation
Transitional words and phrases
Structure
Vocabulary



HOW TO PREPARE:

Review punctuation: commas, semicolons, colons, dashes, and apostrophes.

Review subject-verb agreement, parallel structure, vocabulary, transitional words and phrases, verb tense, idioms, and redundancy.

Take practice exams.

FAQs

What is superscoring on the SAT?

While some colleges and universities want your single-highest SAT score, others may superscore. Consider the following scores:

	Test Date: March	Test Date: May	Super Score
Reading and W&L Score	600	720	720
Math Score	790	710	790
Total Score	1390	1430	1510

When should I take the SAT?

It depends on your academic and extracurricular schedule. Consider taking the SAT after you've completed almost all of Algebra II. Also, make sure that your schedule enables you to prioritize SAT preparation. Ideally, you will take the SAT for the first time no later than the end of 11th grade.

What is the purpose of the SAT?

The SAT is used to extend college admissions and scholarships to students. It's also used to exempt students from remedial courses.

Do colleges prefer one exam to the other?

Most colleges will accept the SAT and ACT, without a preference for one or the other.

I have a learning disability. Help!!!

You may qualify for accommodations such as extra time. Work with the SAT (collegeboard.org) and the ACT (act.org) and your counselor to determine if you qualify for accommodations.

What's a good score on the SAT?

You can score in the range of 400 – 1600. What are your goals? Are you a highly sought out athlete aiming to attend a state school? Are you striving to attend an Ivy League school? Are you striving to earn academic scholarships? Talk with your prospective colleges' recruiters about their score requirements.

How do I sign up for the SAT?

Visit www.collegeboard.org to register for the SAT.

How do I get fee waivers for the SAT and ACT?

Talk with your school counselor.

How do I get a copy of the SAT that I take?

Request the Question-and-Answer Service from the College Board. Note: this service is available for selected test administrations.



MATH

No Calculator
Questions: 20 questions
Time: 25 minutes

With Calculator
Questions: 38 questions
Time: 55 minutes



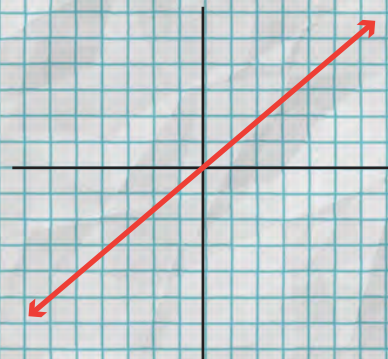
FAVORITE STRATEGY

Plug in numbers to make abstract questions easier to understand.

TOP 7 CONCEPTS TO REVIEW FOR THE MATH SECTION:

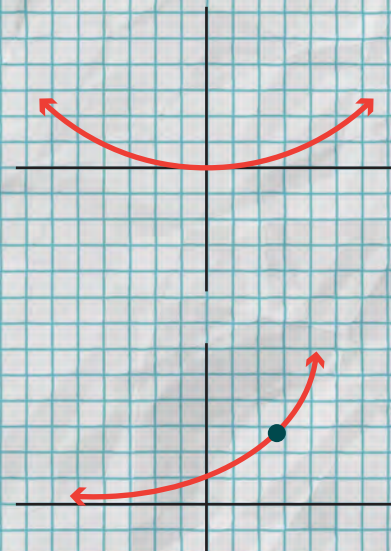
#1 — LINEAR FUNCTIONS

(Forms: Equation, Graph, Table, Word Problem)



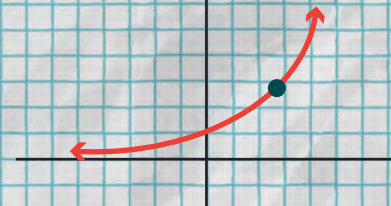
#2 — QUADRATIC FUNCTIONS

(Forms: Equation, Graph, Table, Word Problem)



#3 — EXPONENTIAL FUNCTIONS

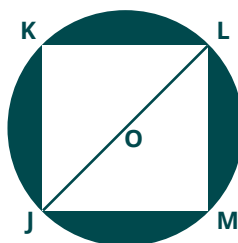
(Forms: Equation, Graph, Table, Word Problem)



#4 — RATIOS, PERCENTS, AND PROPORTIONS:

The 650 people living in Read County either live north of the river or south of the river. 45% of the people live north of the river. What is the ratio of people who live north of the river to those who live south of the river?

#5 — MEASUREMENT: CIRCLES, POLYGONS, AND 3-D OBJECTS

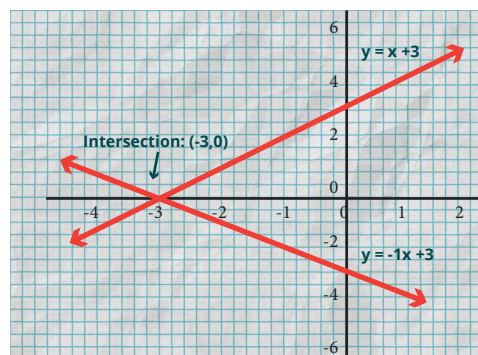


11) If area of square JKLM above is 36, then what is the area of the circle with center O?

- (a) 18π (b) 36π (c) 72π (d) 81π

#6 — SYSTEMS OF EQUATIONS

(Forms: Equation, Graph, Table, Word Problem):



#7 — MEAN, MEDIAN, MODE, AND RANGE

Archgrove Fundraising Results		
Money Raised	Number of Adults	Number of Kids
\$100	10	14
\$75	4	21
\$25	46	15

- a) What is the average amount each adult raised? (Round to the nearest dollar)
b) What is the median amount of money raised?
c) What is the mode amount of money raised?